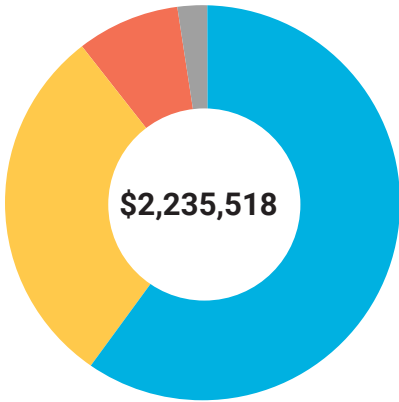


OPERATING REVENUE



Corporate / Foundations
\$1,347,314



Government Funding
\$655,141



Individual Donors
\$178,324



Interest
\$54,739

OPERATING EXPENSES



Programs
\$1,362,806



Administration
\$493,636

\$1,856,442



TOTAL LOANS
DISBURSED SINCE
INCEPTION

\$2.22M

LOANS SINCE
INCEPTION

558

RISE LOANS

71 F21 loans
disbursed

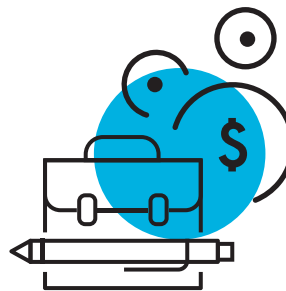
262 F21 active
loans

88% F21 loan
repayment rate



239

F21 TRAINING
PROGRAM
PARTICIPANTS



F21 YEAR-END
LOAN PORTFOLIO

\$789K